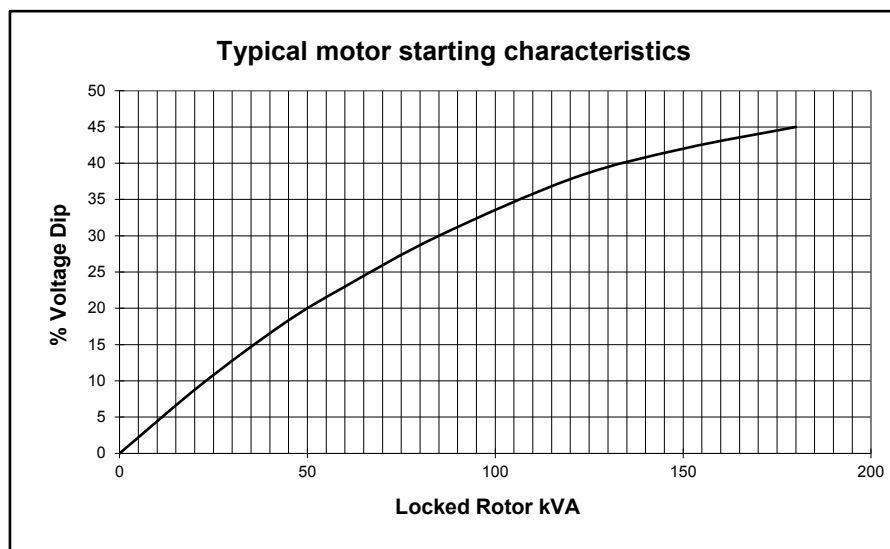
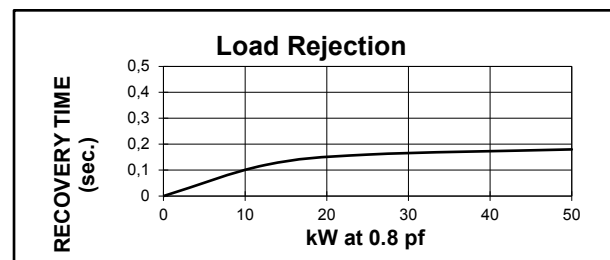
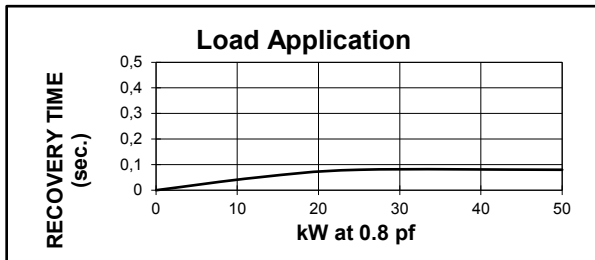
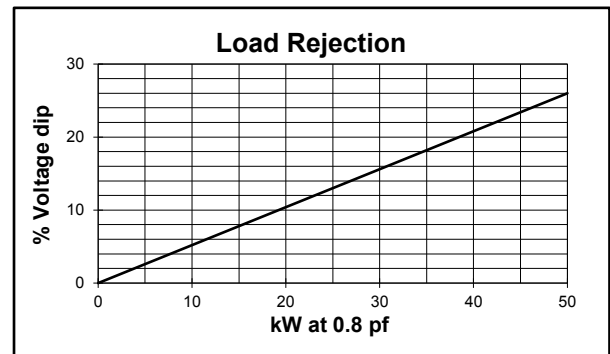
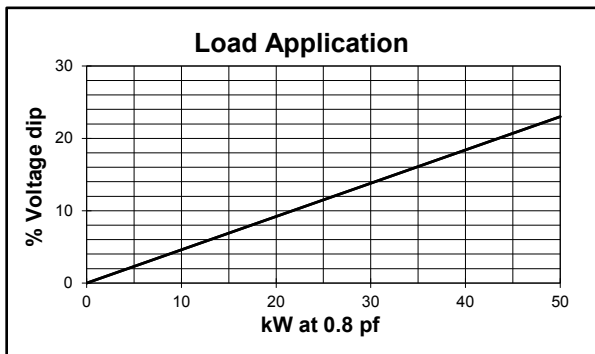
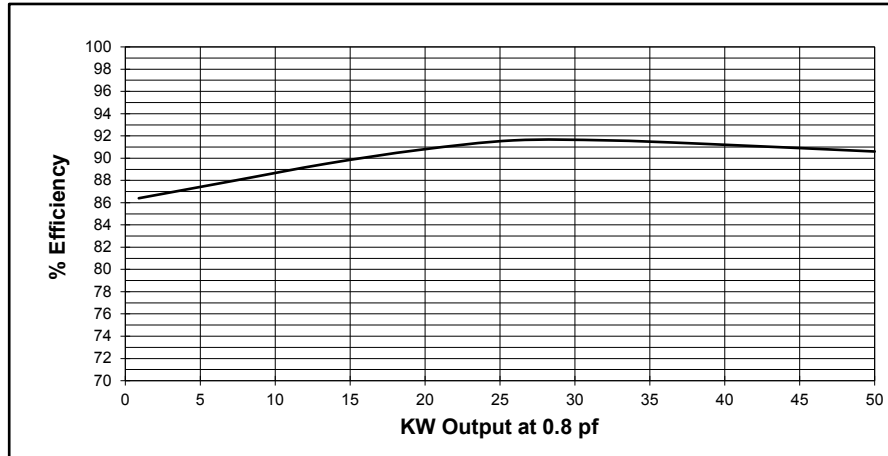


Electrical Characteristics			
Frequency	Hz	400	
Voltage (star)	V	208	
Rated power class H (125°C)	kVA	60	
	kW	48	
Rated power class F (105°C)	kVA	55	
	kW	44	
Rated power class B (80°C)	kVA	48	
	kW	38,4	
Regulation with	UVR6/1-H400B	±1% with any power factor and speed variations between -5% +30%	
Insulation class		H	
Execution		Brushless	
Stator winding		12 ends	
Submittal Data : 208V, 60KVA, 2000RPM, 400Hz, 3 Phase		MIL-STD-705C	
Efficiencies	4/4	%	91,3
(see graph. for details)	3/4	%	91,6
	2/4	%	89,5
	1/4	%	86,4
		%	
Reactances	Xd	p.u.	1,38
	Xd'	p.u.	0,16
	Xd''	p.u.	0,10
	Xq	p.u.	1,20
	Xq'	p.u.	1,20
	Xq''	p.u.	0,27
	X <sub>2</sub>	p.u.	0,16
	X <sub>0</sub>	p.u.	0,05
	Short Circuit Ratio	Kcc	
Time Constants	Td'	sec.	0,05
	Td''	sec.	0,1
	Tdo'	sec.	1,30
	Tα	sec.	0,85
Short Circuit Current Capacity		%	>300
Excitation at no load	Amp.		0,6
Excitation at full load	Amp.		2,4
Overload (long-term)	%	1 hour in a 6 hours period 110% rated load	
Overload per 20 sec.	%	300	
Stator Winding Resistance (20°C)	Ω	0,0118	
Rotor Winding Resistance (20°C)	Ω	6,449	
Exciter Resistance (20 °C)	Ω	Rotor : 0,65     Stator : 15,28	
Heat dissipation	W	3659	
Telephone Interference		FHT < 2% ; TIF < 100	
Radio interference		EN61000-6-3 EN61000-6-2. For others standards apply to factory	
Waveform Distors.(THD) at f. load	% LL	2,1	
Individual harmonic max. at f. load	% LL	1,2	
Insulation resistance	MΩ	> 2	
High Potential Test	Volts	Main Stator : 2000     Main Rotor : 1500	
	Volts	Exciter Stator : 1500     Exciter Rotor : 1500	
Phase sequence		1 - 5 - 9	
Mechanical characteristics			
Protection		IP 21 ( other protection on request )	
DE bearing		6314.2RS	
NDE bearing		6311.2RS	
Weight of complete generator	kg	346	
Synchronous Speed	rpm	2000	
Maximun overspeed	rpm	2500	
Cooling air requirement	m³/min	25,5	
Noise level at 1m/7m	dB(A)	85 / 71	

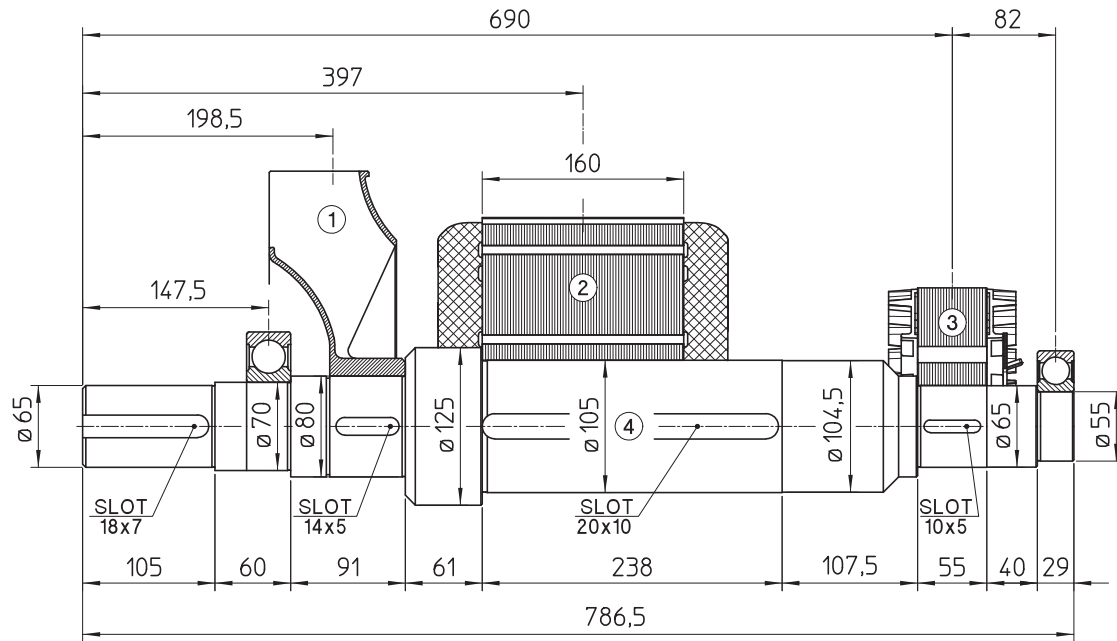
All technical data are to be considered as a reference and they can be modified without any notice.

This document is a propriety of Mecc Alte S.p.a..All rights reserved.

## 208V - 400Hz

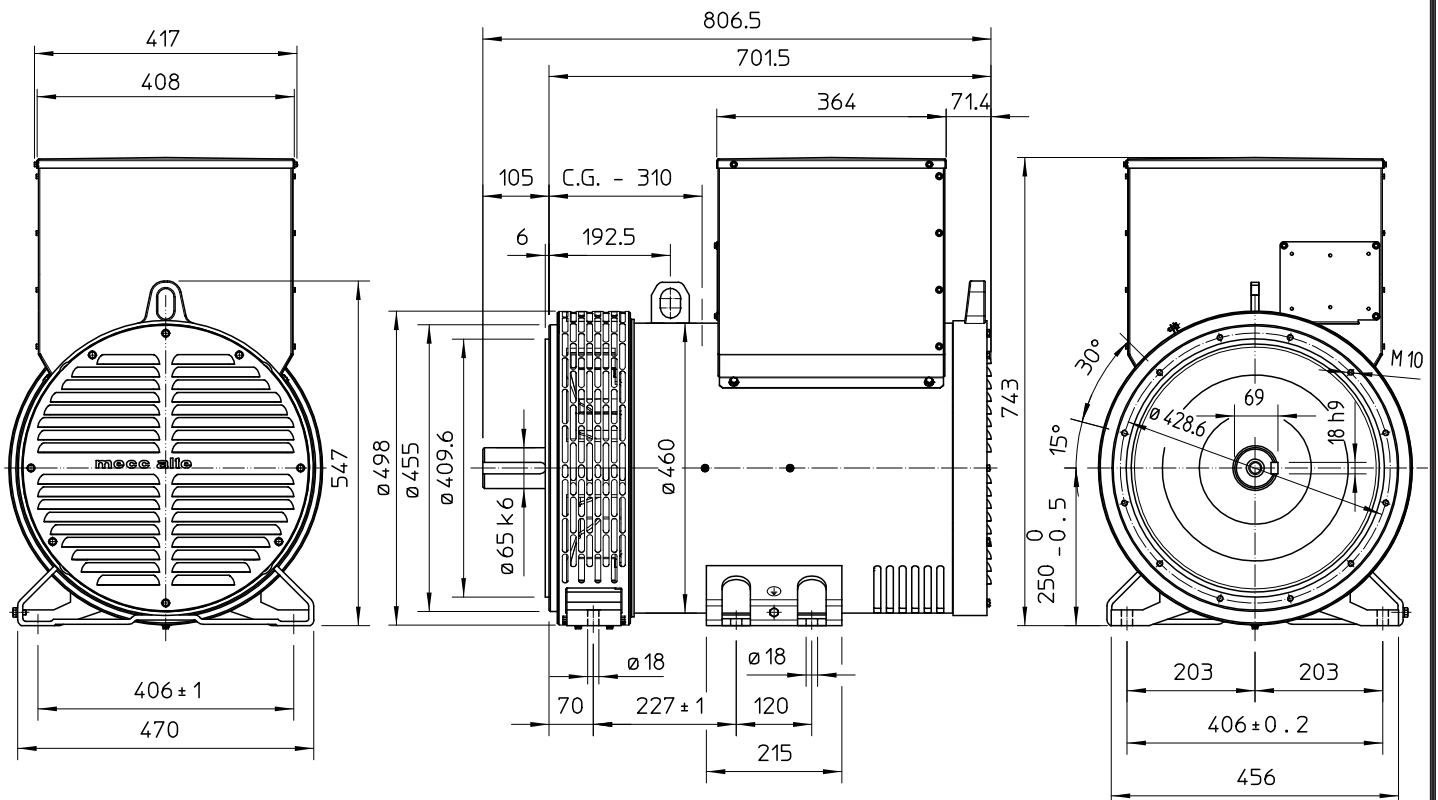


## TWO BEARING MOMENTS OF INERTIA



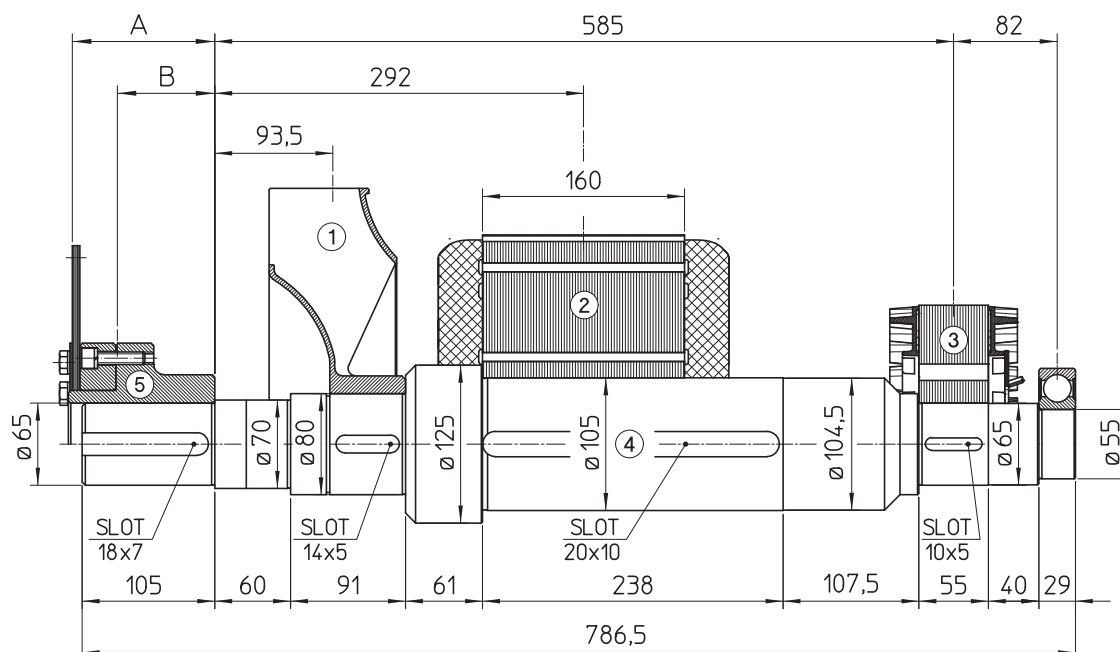
POS.	COMPONENT	WEIGHT (kg)	J (kgm <sup>2</sup> )
1	FAN	3.6	0.0621
2	MAIN ROTOR	84.7	1.2912
3	EX. ROTOR	14.5	0.0874
4	SHAFT	38.8	0.0476
TOTAL		141.6	1.4883

## TWO BEARING DIMENSIONS



C.G.= GRAVITY CENTER

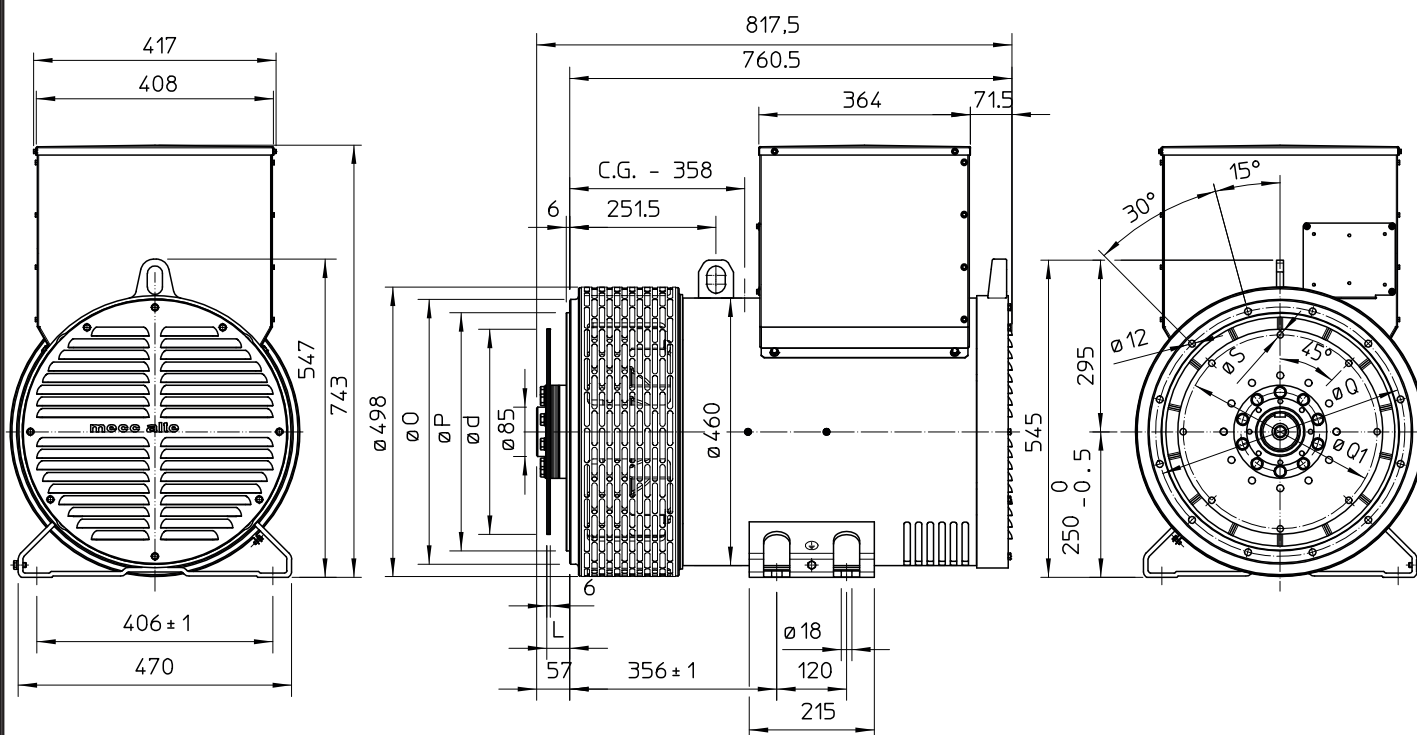
## SINGLE BEARING MOMENTS OF INERTIA



POS.	COMPONENT	WEIGHT (kg)	J (kgm <sup>2</sup> )
1	FAN	3.6	0.0621
2	MAIN ROTOR	84.7	1.2912
3	EX. ROTOR	14.5	0.0874
4	SHAFT	38.8	0.0476
TOTAL		141.6	1.4883

POS.	COMPONENT	SAE N°	A	B	WEIGHT (kg)	J (kgm <sup>2</sup> )
5	SHAFTS COUPLING FLEX PLATE	10	112.8	77.2	13.5	0.0770
		11 1/2	98.4	71.5	12.4	0.0956
		14	84.4	68.6	14.8	0.2360

## SINGLE BEARING DIMENSIONS



SAE N.	FLANGIA / FLANGE BRIDE / FLANSCH		
	O	P	Q
3	451	409.6	428.6
2	489	447.7	466.7
1	552	511.2	530.2

SAE N.	GIUNTI A DISCHI / DISC COUPLING DISQUE DE MONOPALIER / SCHEIBENKUPPLUNG			
	L	d	Q1	S
10	53.8	314.32	295.27	11
11 1/2	39.6	352.42	333.37	11
14	25.4	466.72	438.15	14

C.G.= GRAVITY CENTER