



DIPOT

Electronic module for SICES controllers

DIPOT (Digital Potentiometer) is an electronic device able to provide a current loop output signal up to $\pm 20\text{mA}$.

DIPOT can be connected to different devices like speed governor and AVRs which needs a voltage or current inputs.

The adjustment of the output can be done with UP/DOWN commands or via Modbus, either via CANBUS J1939.

Three configurations available:

From 0 to +20mA

From -10mA to +10mA

From -20mA to +20mA

General info

DIPOT can be used in many applications as an alternative to traditional motorized potentiometers considering the signal output is galvanically isolated from the voltage of the device and from all the signalling commands.

The module is available in different versions:

DIPOT RS485 0...5V - 0...10V

Cod. E6102094300XX

DIPOT RS485 Temperature and Pressure VDO

Cod. E6102094301XX

DIPOT CANBUS 0...5V - 0...10V

Cod. E6102094302XX

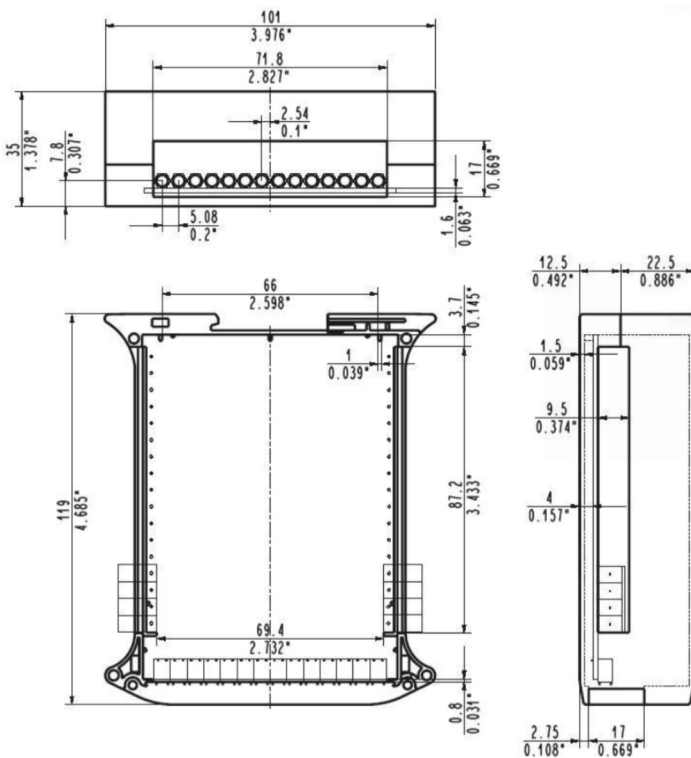
DIPOT CANBUS Temperature and Pressure VDO

Cod. E6102094303XX

Technical data

Supply voltage:	7,5...32 Vdc
Voltage feeder	12Vdc or 24Vdc
Power consumption:	8mA - 10V
Operating temperature:	-20 °C to 60 °C
Weight:	500g
Overall dimension:	35Wx119Lx101mm
Panel mounting:	by DIN bar EN50022
EMC:	conformity to EN61326-1.
Safety:	built in conformity to EN61010-1

If required, available tropicalized version for hazardous areas.



S.I.C.E.S. SRL

Società Italiana Costruzioni Elettriche Sumirago

Via Molinello 8B
21040 - Jerago con Orago (VA) ITALY

T +39 0331 212941
F +39 0331 216102

www.sices.eu
sales@sices.eu

SICES BRASIL LTDA

Avenida Juruá 105 – Barueri – Bloco 5
06455 – 010 São Paulo (BR)

CNPJ 17.774.501/0001-28

+55 (11) 4193 2008

www.sicesbrasil.com.br
contato@sicesbrasil.com.br

