

HCP34

MECCALTE spa - Via Roma, 20 - 36051 CREAZZO (VI) ITALIA
 Tel. +39 0444/396111 - Fax +39 0444/396166 - e-mail : info@meccalte.it
 web site: www.meccalte.com

24 POLE **A**

400 Hz 2000 r.p.m.

CHARACTERISTICS

ambient 40° C

Type	KVA - cos φ 0.8 - 3 Phase continuous			EFFICIENCY		
	CL. H (ΔT= 125°C)		CL. F (ΔT= 105°C)	η % CL. H(ΔT= 125°C)		
400 Hz						
Series Star Λ	415	IP45	415	2/4	3/4	4/4
Parallel Star $\Lambda\Lambda$	208		208			
Series Delta Δ	240		240			
Parallel Delta $\Delta\Delta$	120		120			
HCP 34-1S/24	60	45	55	89,5	91,6	91,3
HCP 34-2S/24	90	66	80	89,3	91,7	92,4
HCP 34-2L/24	125	90	110	89,7	92,3	92,8

According BS 2G 219 - EN2292 - ISO 6858 - Mil Std 704F

Type	J (Kgm ²) B3-B14 FORM	Weight MD35 (Kg)	Air Volume (m ³ /min)	Noise dB(A)	
				2000 r.p.m.	
			2000 r.p.m.	1m	7m
HCP 34-1S/24	1,4883	346	25,5	85	71
HCP 34-2S/24	2,0795	420			
HCP 34-2L/24	2,8516	502			

ACCESSORIES

REGULATOR		PARALLEL DEVICE	THERMAL PROTECTION			HEATERS	MECHANICAL PROTECTION		
UVR6/1-H400B	SR7/H400B		PTC	BIMET DEVICE	PT100		IP23	IP45	IP55
●	□	□	□	□	□	□	●	□	□

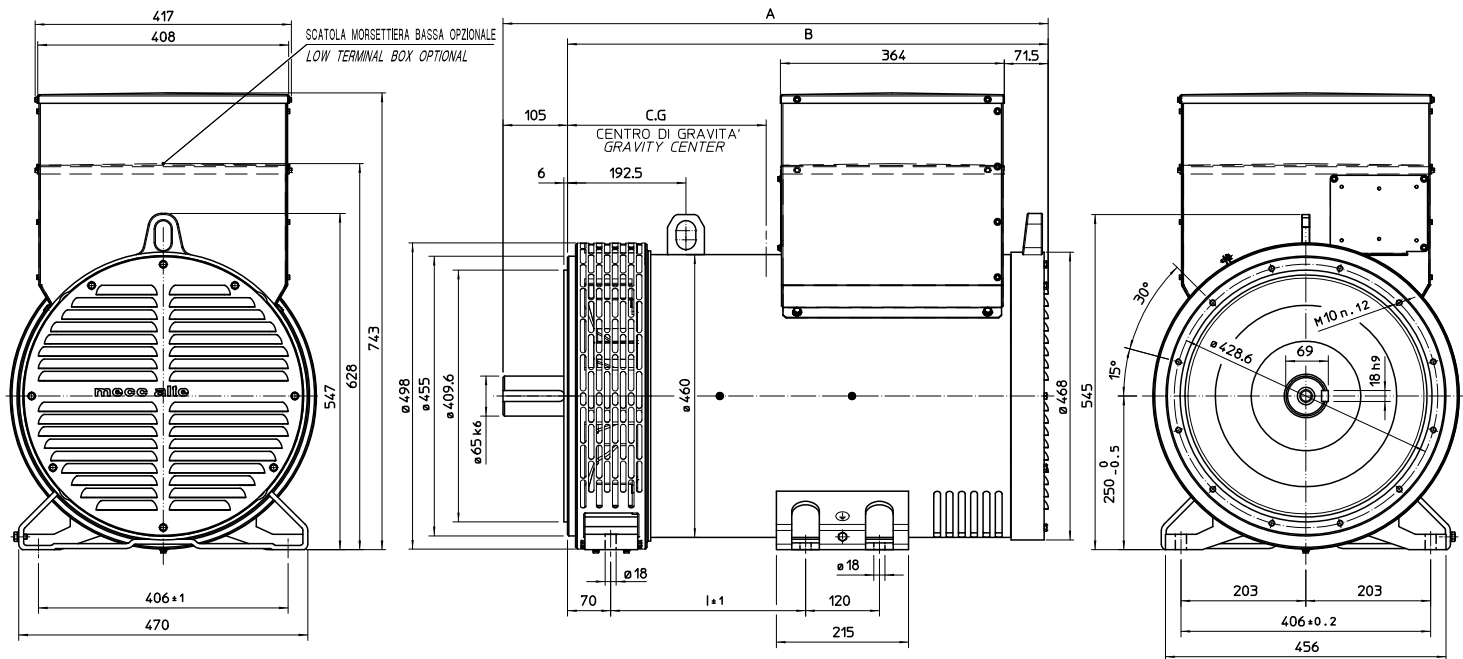
● = Standard □ = Optional

Rating



OVERALL DIMENSIONS B3 - B14 FORM

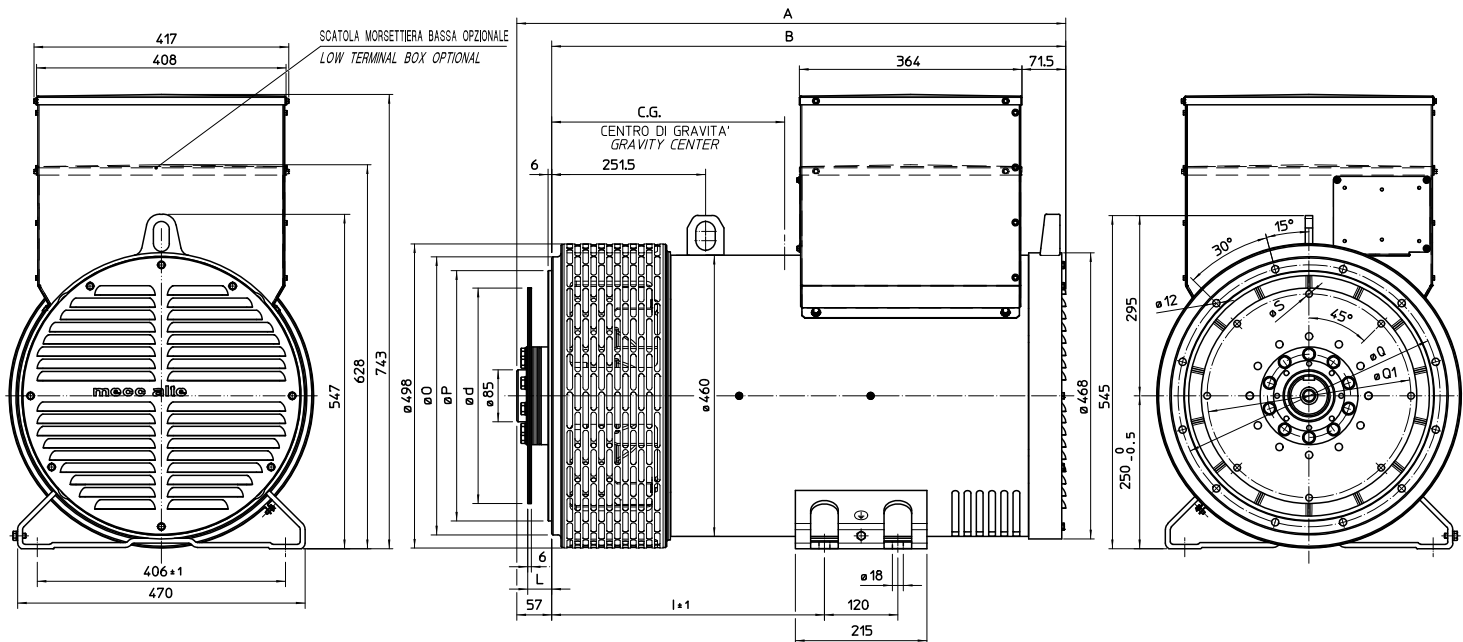
dimensions in mm



TYPE	C.G	TYPE	A	B	I
HCP34- 1S/24	320	HCP 34 S	806,5	701,5	227
HCP34- 2S/24	334	HCP 34 L	886,5	781,5	317
HCP34- 2L/24	486				

OVERALL DIMENSIONS MD35 FORM

dimensions in mm



SAE N.	DISC COUPLING			
	L	d	Q1	S
10	53,8	314,32	295,27	11
11 1/2	39,6	352,42	333,37	11
14	25,4	466,72	438,15	14

SAE N.	FLANGE		
	O	P	Q
3	451	409,6	428,6
2	489	447,7	466,7
1	552	511,2	530,2

TYPE	C.G
HCP34-1S/24	358
HCP34-2S/24	398
HCP34-2L/24	425

TYPE	A	B	I
HCP 34 - S	817,5	760,5	356
HCP 34 - L	897,5	840,5	446