
**meccalte**


# HCP32

MECCALTE spa - Via Roma, 20 - 36051 CREAZZO (VI) ITALIA  
 Tel. +39 0444/396111 - Fax +39 0444/396166 - e-mail : info@meccalte.it  
 web site: www.meccalte.com

## 20 POLE **A**

### 400 Hz 2400 r.p.m.

#### CHARACTERISTICS

ambient 40° C

Type	KVA - cos φ 0.8 - 3 Phase continuous			Efficiency		
	CL. H (ΔT= 125°C)		CL. F (ΔT= 105°C)	η %	CL. H (ΔT= 125°C)	
Series Star $\lambda$	415	IP45	415	2/4	3/4	4/4
Parallel Star $\lambda\lambda$	208		208			
Series Delta $\Delta$	240		240			
Parallel Delta $\Delta\Delta$	120		120			
HCP32-1S/20	45	34	40	86,3	87,9	87,6
HCP32-2S/20	50	38	45	87,1	88,7	88,2
HCP32-2L/20	60	47	55	87,3	89	88,5
HCP32-3L/20	70	54	65	87,9	89,5	89

Type	J (Kgm <sup>2</sup> ) B3-B14 FORM	Weight MD35 (Kg)	Air Volume 2400 rpm (m <sup>3</sup> /min)	Noise dB(A)	
				2400 rpm	
				1m	7m
HCP32-1S/20	0,4795	187	21	84	70
HCP32-2S/20	0,5954	220			
HCP32-2L/20	0,7885	275			
HCP32-3L/20	1,1361	300			

#### ACCESSORIES

REGULATOR		PARALLEL DEVICE	THERMAL PROTECTION			HEATERS	MECHANICAL PROTECTION		
UVR6/1-H400B	SR7/H400B		PTC	BIMET DEVICE	PT100		IP23	IP45	IP55
<input checked="" type="checkbox"/>	<input type="checkbox"/>	<input type="checkbox"/>	<input type="checkbox"/>	<input type="checkbox"/>	<input type="checkbox"/>	<input type="checkbox"/>	<input checked="" type="checkbox"/>	<input type="checkbox"/>	<input type="checkbox"/>

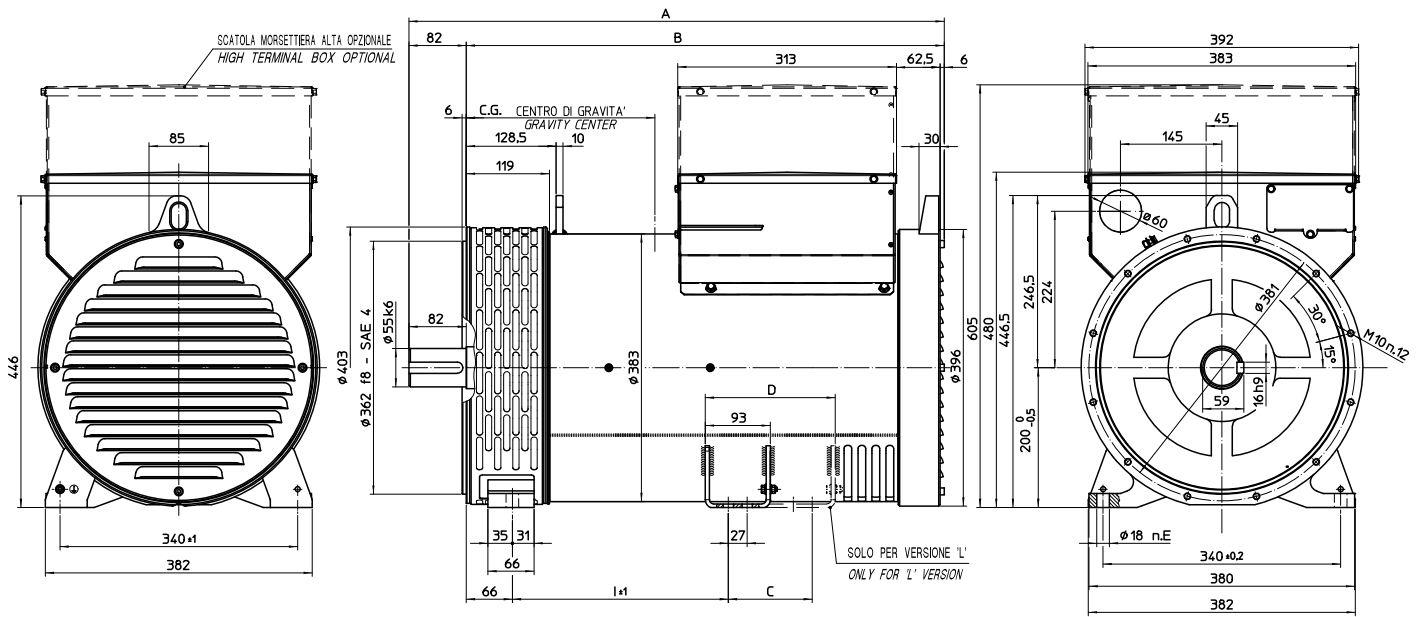
● = Standard    □ = Optional

Rating



## OVERALL DIMENSIONS B3 - B14 FORM

dimensions in mm

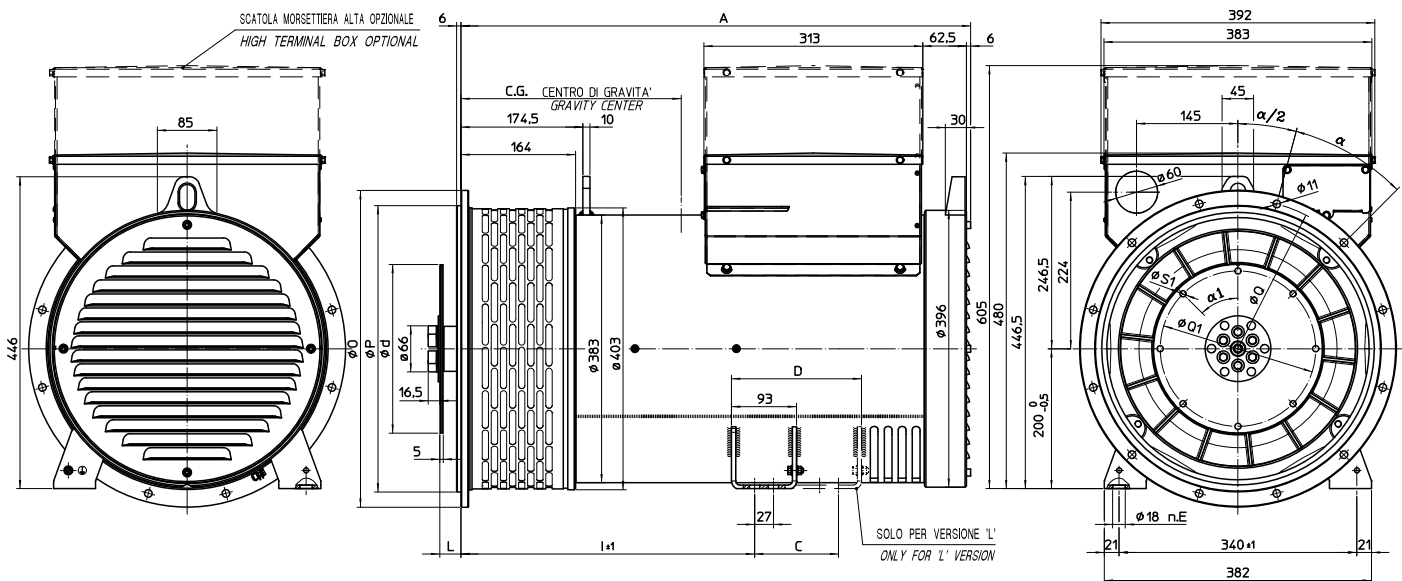


TIPO / TYPE	C. G.
HCP32-1S/4	266
HCP32-2S/4	272
HCP32-2L/4	330
HCP32-3L/4	351

TIPO/TYPE/TYP	A	B	I	C	D	E
HCP 32 S	638	556	184	-	-	6
HCP 32 L	763	681	309	120	186	10

## OVERALL DIMENSIONS MD35 FORM

dimensions in mm



TIPO / TYPE	C. G.
HCP32-2S/4	309
HCP32-3S/4	314
HCP32-2L/4	377
HCP32-3L/4	388

TIPO/TYPE/TYP	A	I	C	D	E
HCP32 S	601	295	-	-	4
HCP32 L	726	420	120	186	8

SAE N.	GIUNTI A DISCHI DISC COUPLING DISQUE DE MONOPALIER SCHEIBENKUPPLUNG				
	L	d	Q1	S1	α1
6 1/2	30,2	215,9	200	9	60°
7 1/2	30,2	241,3	222,25	9	45°
8	62	263,52	244,47	11	60°
10	53,8	314,32	295,27	11	45°
11 1/2	39,6	352,42	333,37	11	45°

SAE N.	FLANGIE FLANGE BRIDE FLANSCHEN BRIDAS			
	O	P	Q	α
5	356	314,3	333,4	45°
4	403	362	381	30°
3	451	409,6	428,6	30°
2	490	447,7	466,7	30°
1	552	511,2	530,2	30°