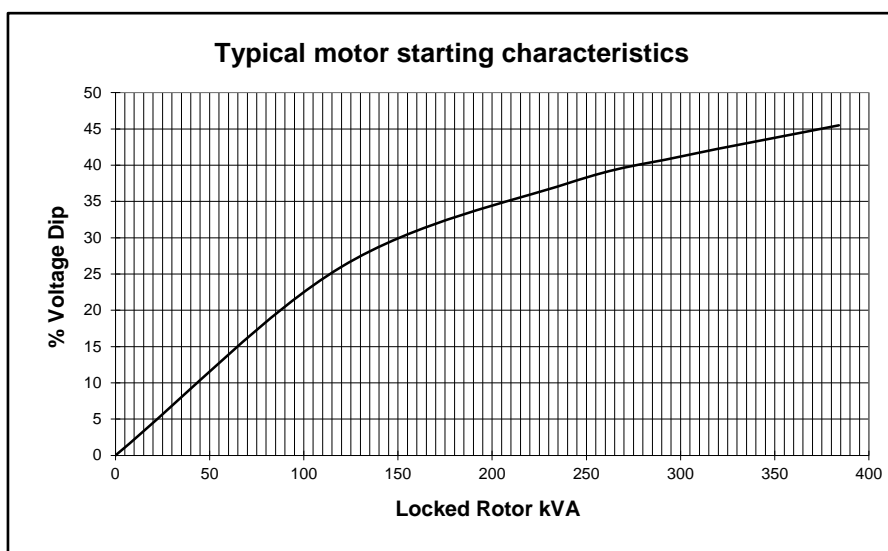
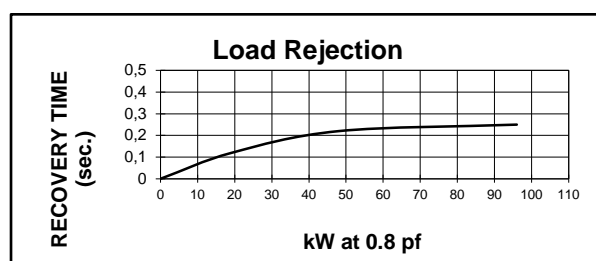
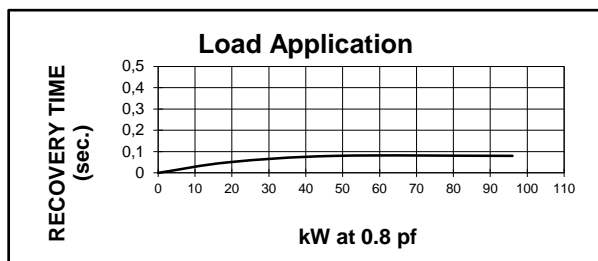
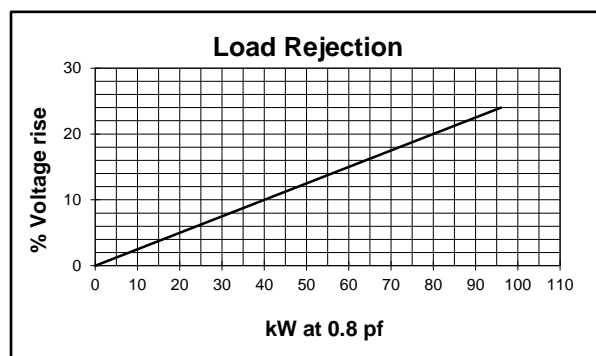
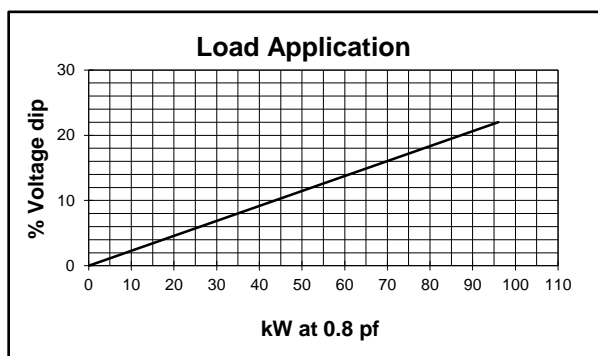
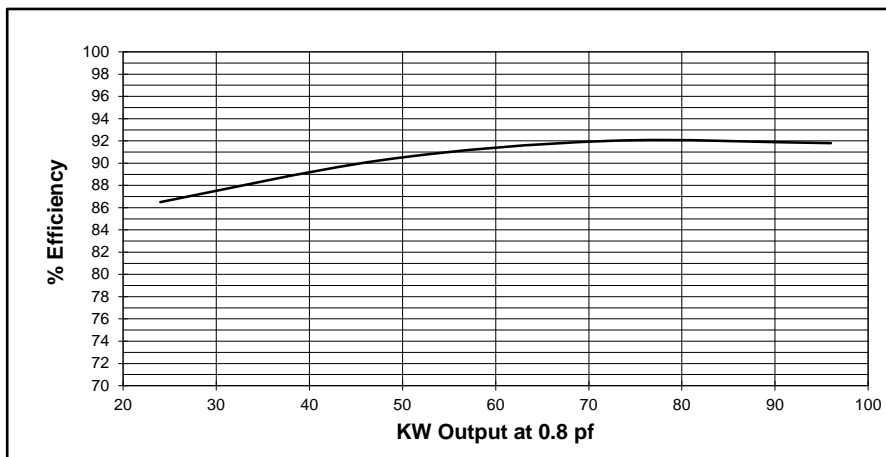


Electrical Characteristics			
Frequency	Hz	400	
Voltage (star)	V	208	
Rated power class H (125°C)	kVA	120	
	kW	96	
Rated power class F (105°C)	kVA	110	
	kW	88	
Rated power class B (80°C)	kVA	96	
	kW	77	
Regulation with	UVR6/1-H400B	±1% with any power factor and speed variations between -5% +30%	
Insulation class		H	
Execution		Brushless	
Stator winding		12 ends	
Submittal Data : 208V, 120KVA, 1846RPM, 400Hz, 3 Phase			
MIL-STD-705C			
Efficiencies	4/4	%	91,8
(see graph. for details)	3/4	%	92
	2/4	%	90,3
	1/4	%	86,5
Reactances	Xd	p.u.	0,80
	Xd'	p.u.	0,24
	Xd''	p.u.	0,20
	Xq	p.u.	0,62
	Xq'	p.u.	0,62
	Xq''	p.u.	0,28
	X ₂	p.u.	0,20
	X ₀	p.u.	0,07
Short Circuit Ratio	Kcc		1,55
Time Constants	Td'	sec.	0,05
	Td''	sec.	0,010
	Tdo'	sec.	0,50
	Tα	sec.	0,1
Short Circuit Current Capacity		%	>300
Excitation at no load	Amp.	1	
Excitation at full load	Amp.	2,5	
Overload (long-term)	%	1 hour in a 6 hours period 110% rated load	
Overload per 20 sec.	%	300	
Stator Winding Resistance (20°C)	Ω	0,0045	
Rotor Winding Resistance (20°C)	Ω	4,7	
Exciter Resistance (20 °C)	Ω	Rotor : 0,682 Stator : 14,40	
Heat dissipation	W	8575	
Telephone Interference		Not Applicable	
Radio interference		EN61000-6-3 EN61000-6-1. For others standards apply to factory	
Waveform Distors.(THD) at f. load	% LL	1,4	
Individual harmonic max. at f. load	% LL	1,2	
Insulation resistance	MΩ	> 2	
High Potential Test	Volts	Main Stator : 2000 Main Rotor : 1500	
	Volts	Exciter Stator : 1500 Exciter Rotor : 1500	
Phase sequence		1 - 5 - 9	
Mechanical characteristics			
Protection		IP 23 (other protection on request)	
DE bearing		6318.2RS	
NDE bearing		6314.2RS	
Weight of complete generator	kg	629	
Synchronous Speed	rpm	1846	
Maximun overspeed	rpm	2307	
Cooling air requirement	m³/min	38	
Noise level at 1m/7m	dB(A)	85 / 72	

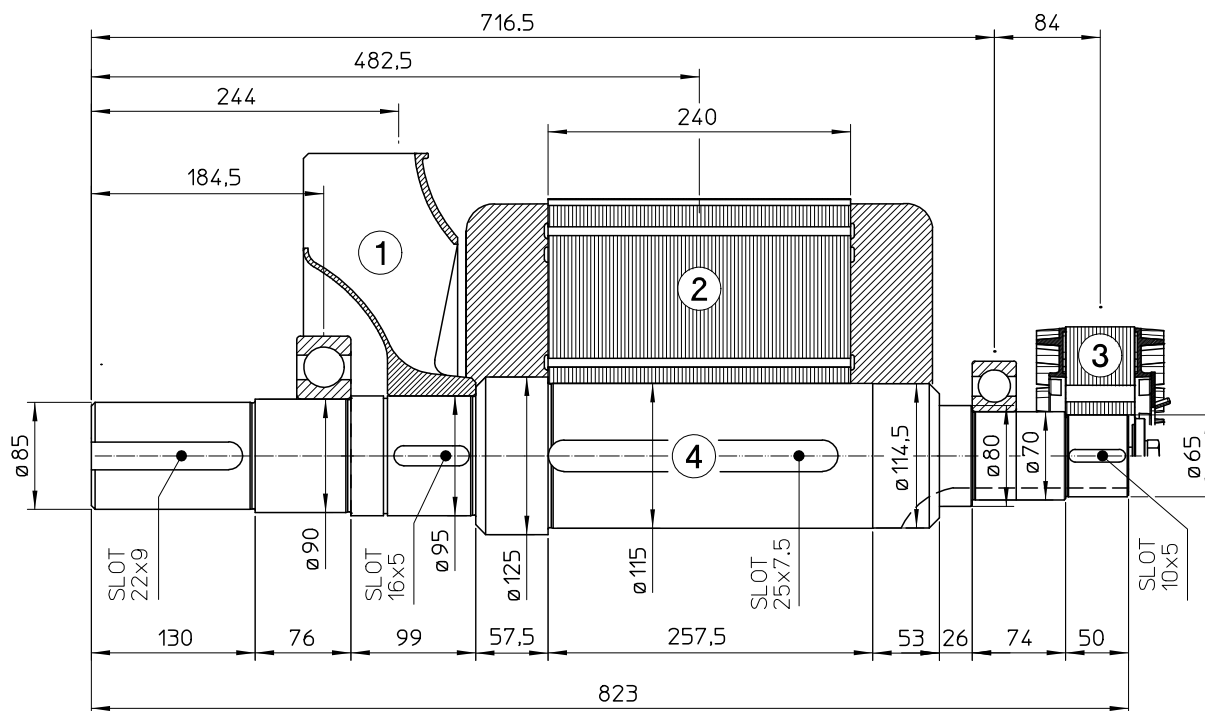
All technical data are to be considered as a reference and they can be modified without any notice.

This document is a propriety of Mecc Alte S.p.a..All rights reserved.

208V - 400Hz

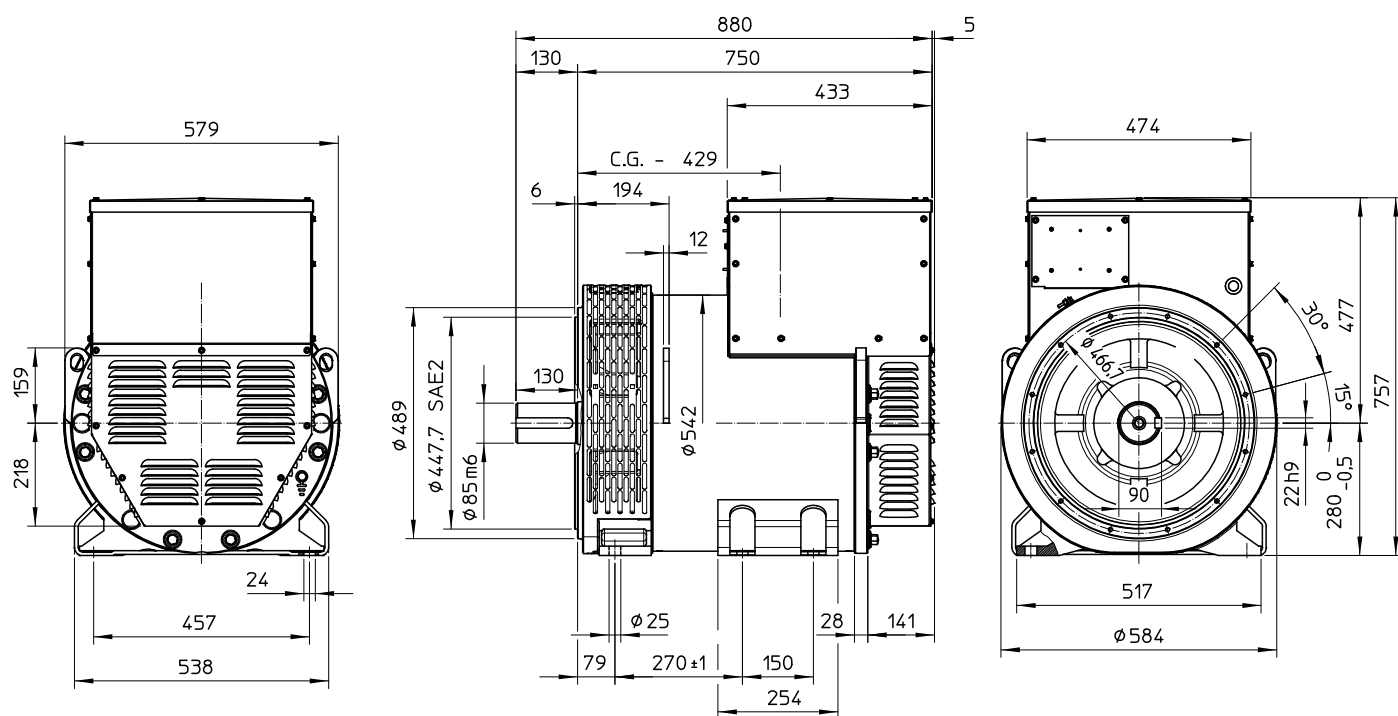


TWO BEARING MOMENTS OF INERTIA



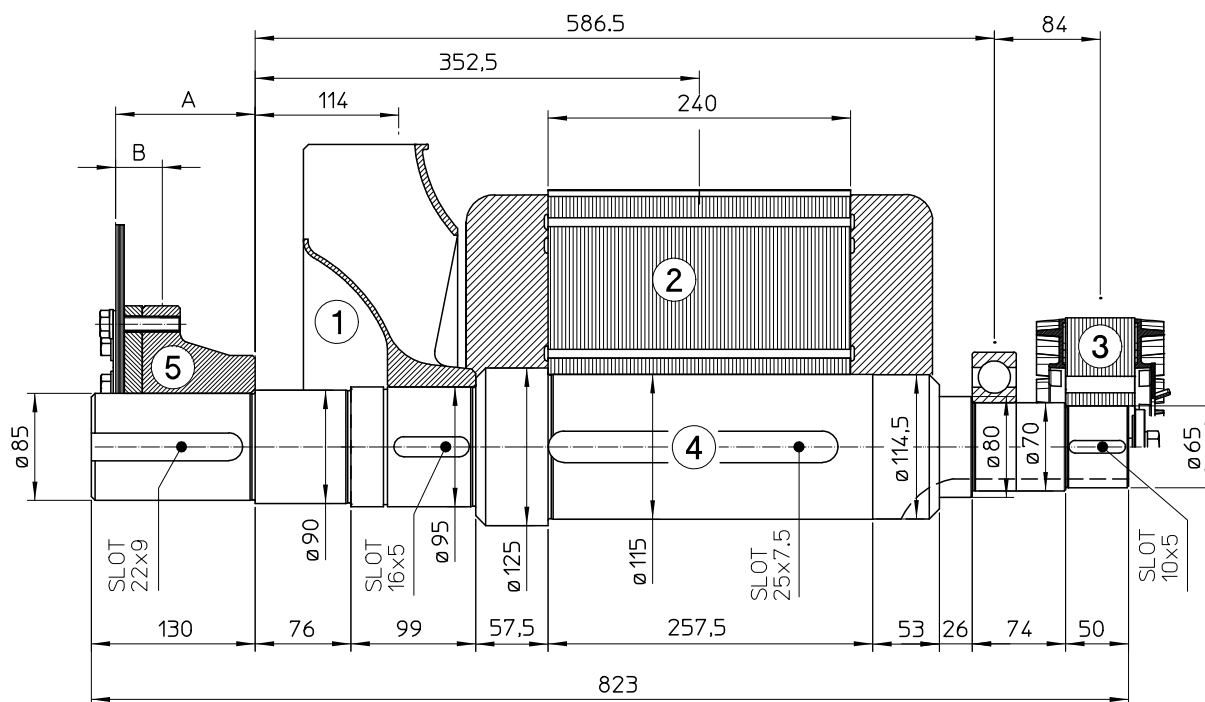
POS.	COMPONENT	WEIGHT (kg)	J (kgm ²)
1	FAN	6.5	0.1532
2	MAIN ROTOR	207.3	4.9331
3	EX. ROTOR	14.9	0.0977
4	SHAFT	49.5	0.0687
TOTAL		278.2	5.2527

TWO BEARING DIMENSIONS



C.G.= GRAVITY CENTER

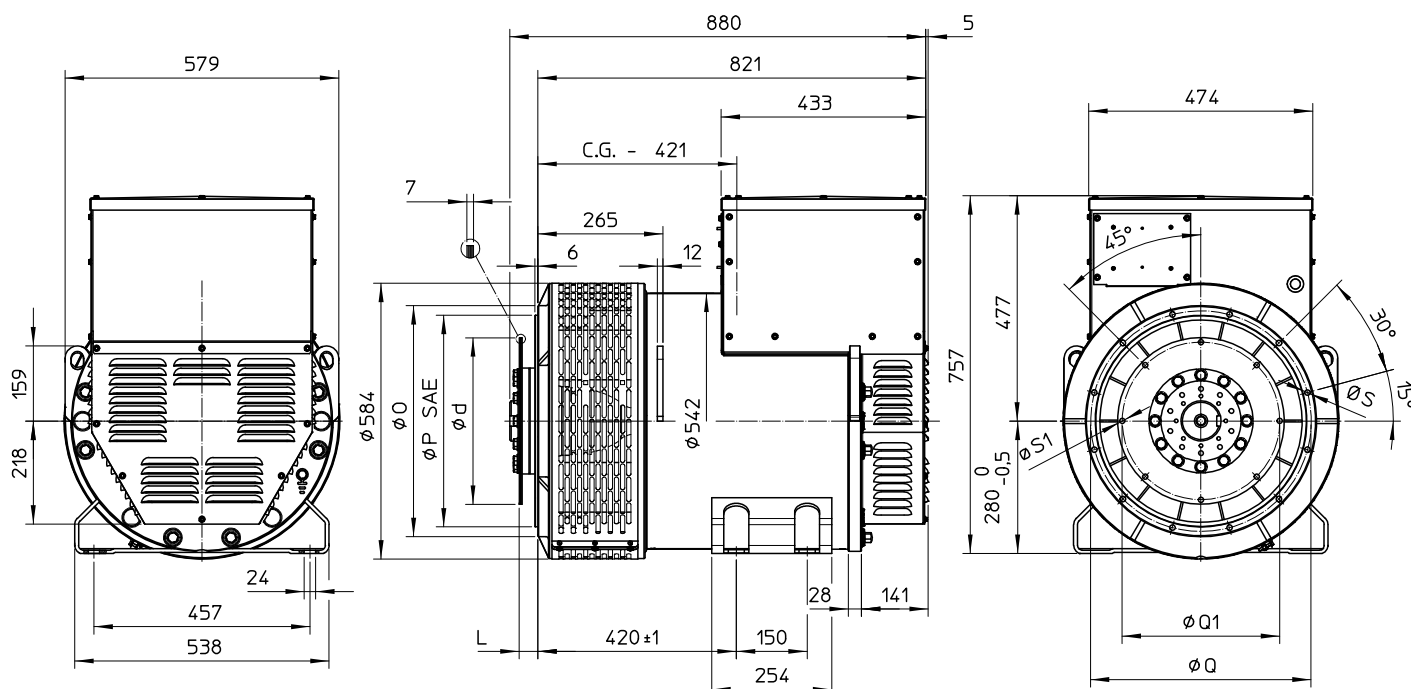
SINGLE BEARING MOMENTS OF INERTIA



POS.	COMPONENT	WEIGHT (kg)	J (kgm ²)
1	FAN	6.5	0.1532
2	MAIN ROTOR	207.3	4.9331
3	EX. ROTOR	14.9	0.0977
4	SHAFT	49.5	0.0687
TOTAL		278.2	5.2527

SAE N°	5 SHAFTS COUPLING FLEX PLATE			
	A	B	WEIGHT kg	J kgm ²
11.5	110.4	37	19.5	0.170
14	96.4	24	22.2	0.329

SINGLE BEARING DIMENSIONS



SAE N.	FLANGIA / LANGE BRIDE / FLANSCH			
	O	P	Q	S
3	451	409.6	428.6	11
2	490	447.7	466.7	11
1	552	511.2	530.2	11
1/2	648	584.2	619.1	14

SAE N.	GIUNTI A DISCHI / DISC COUPLING DISQUE DE MONOPALIER / SCHEIBENKUPPLUNG			
	d	L	Q1	S1
11 1/2	352.42	39.6	333.37	11
14	466.72	25.4	438.15	13.5

C.G.= GRAVITY CENTER